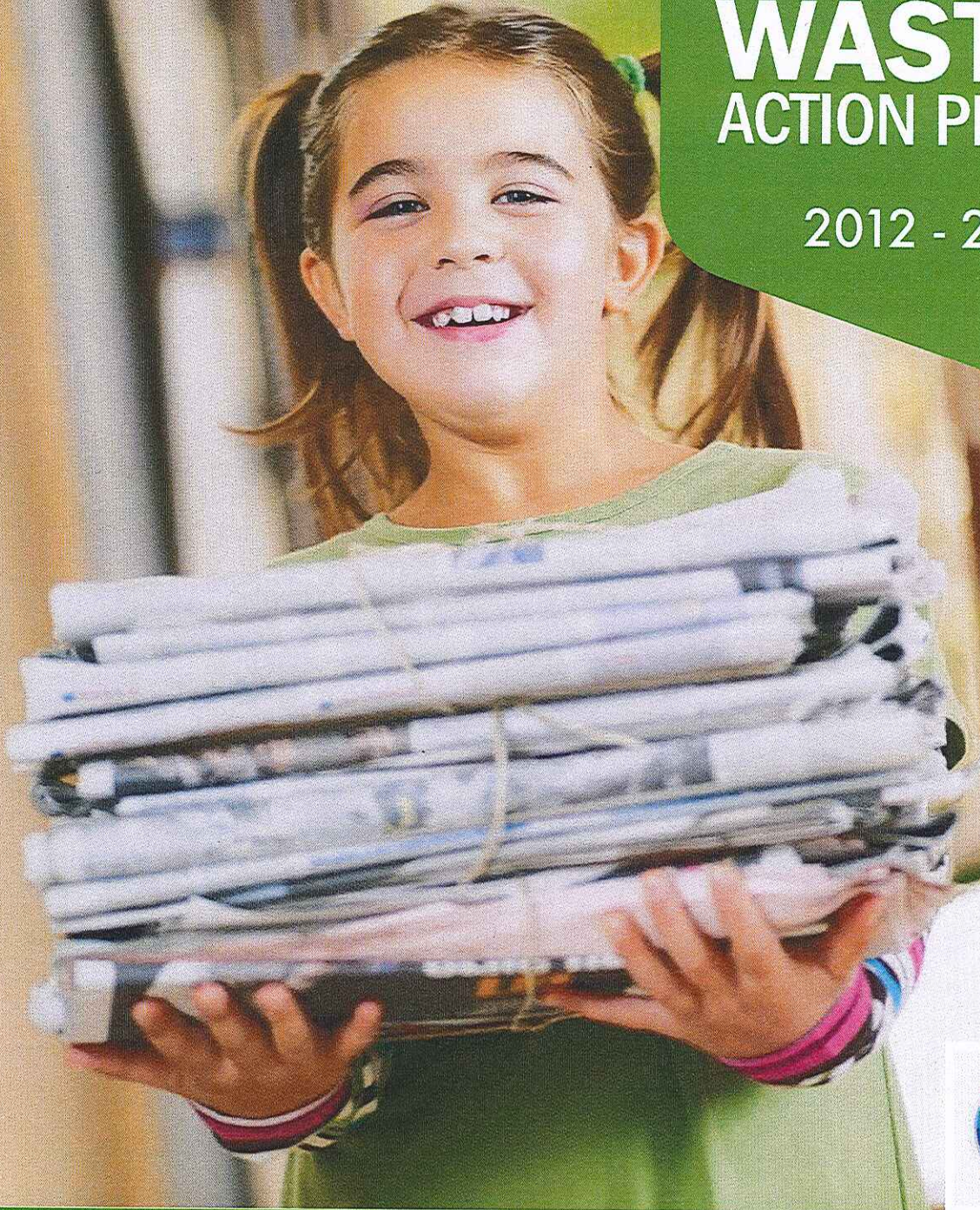




green

TOWARDS **ZERO** WASTE ACTION PLAN

2012 - 2015





glass
bottles & jars

BOTTLES & JARS
ONLY
IN THIS RECYCLED PLASTIC

Introduction

Waste produced in Belfast cost ratepayers £15 million to dispose of in 2011. We are committed to reducing these costs and to protecting the environment by:

- Promoting waste reduction
- Recycling more
- Going beyond legal targets
- Sending less to landfill

Our key message is Reduce, Reuse and Recycle. In 2011, we recycled 32% of our waste. However we know that 70% of the waste we produce could be recycled if everyone plays their part.

We have set ourselves ambitious targets over the next few years to:

- Achieve a recycling rate of 50% by 2015
- Reduce the amount of biodegradable waste we send to landfill by 35% of 2010/11 levels by 2015
- Achieve a recycling rate of 60% by 2020
- Reduce the amount of biodegradable waste we send to landfill by 50% of 2010/11 levels by 2020

We will also work with our neighbouring councils in arc21 to manage our waste and provide modern waste treatment facilities, which will mean that significantly less will be landfilled.

Recycling is much cheaper than disposing of waste in a landfill site, so this makes economic sense. But we need new initiatives, and the help and support of the people of Belfast to succeed in meeting these targets.

During this time we will:

- make it as easy as possible for householders to reduce their waste and recycle as much as possible,
- work with householders and communities to improve recycling levels and achieve our targets, and
- urge everyone to participate in our recycling schemes.

Savings that we make through reducing our landfill costs can be re-invested in other council services such as parks, playgrounds, and community centres.

What happens our waste?

Black bin waste → **straight to landfill**






Blue bin waste → **made into new items**

Brown bin waste → **made into compost**

How we will meet our targets

We have identified the following key areas of work which will be required to ensure we meet our targets. We expect that these improvements and initiatives will almost double our current recycling rate by 2020.

Key areas of work

- 1. Improve recycling collection services for householders (more materials, better services)** 
 - 2. Improve recycling opportunities at recycling centres** 
 - 3. Use a materials sorting facility to extract items which could have been recycled at home** 
 - 4. Develop new recycling campaigns and community based recycling initiatives** 
 - 5. Increase the amount of recyclables collected from existing waste collections** 
 - 6. Collect recyclables from the cityscape (such as markets, events and litter bins)** 
 - 7. Give you more room to recycle in your blue bins and "slim" black bins** 
- * Extend business recycling services** 

1. Improve kerbside recycling collection services

7.7% recycling rate increase

Everyone in the city can recycle most everyday items at home; each household has either a blue bin or black box for their dry recyclables and approximately 60,000 homes have brown bins for food and garden waste.

Kerbside collections play a fundamental role in achieving the city's recycling rate. In 2010 kerbside collections accounted for around 60% of all the recyclables we collected. However, there is still significant scope to increase the amount and range of recyclables collected through these schemes.

2012

We will introduce a mobile recycling collection service for materials not normally collected at the kerbside, for residents living in apartment complexes and housing estates who may find it difficult to take these items to their nearest household recycling centre.

2013

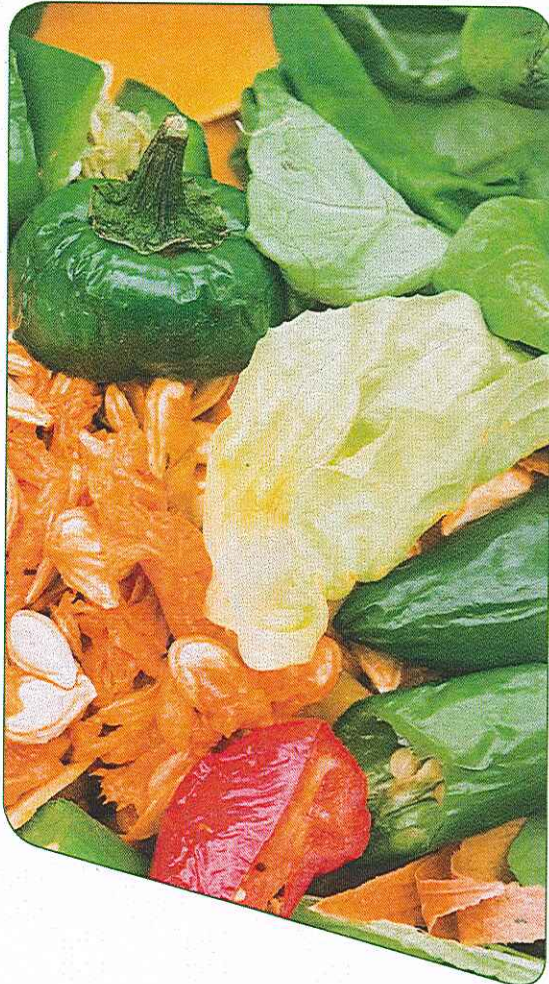
We will start collecting glass from households on the blue bin scheme. This will make it easier for residents to recycle glass bottles and jars. We will also further increase the range of materials that can be accepted in blue bins.

We will introduce a new food waste kerbside recycling collection service to around 50,000 households in the inner city area. This will enable residents to present their food waste for collection and composting every week. At the same time this area will move to fortnightly black bin collections, in line with the rest of the city.

We will also re-organise the collection services in the parts of the city which currently have black boxes, as this is an area of the city which has significant potential to increase recycling.

All these schemes will be supported by promotional campaigns to ensure that all residents can participate fully in recycling so that we achieve our targets. Our waste advisors will provide tailored advice for those households who have not yet fully participated in the recycling schemes.





2. Improve recycling opportunities at recycling centres

5.5% recycling rate increase

We have four household recycling centres in Belfast;

- Alexandra Park (north),
- Blackstaff Way (west),
- Palmerston Road (east), and
- Ormeau Park (south).

As well as collecting the items that most residents can recycle at home, these centres also accept materials and quantities which cannot be collected in the kerbside recycling schemes. They are a key contributor to the recycling rate, with almost one-third (12,000 tonnes) of our recyclables coming from these facilities.

2012

We will recycle and recover the recyclable materials which residents place in the general waste skips at recycling centres.

We will also increase the range of materials we can accept at our recycling centres (for example hard plastics and mattresses).

2014

At the end of the 2014-2015 business year we will open a new household recycling centre at Springvale Industrial Park in the west of the city. This facility will be the final piece in the jigsaw in terms of household recycling centre provision.

We will promote the recycling centres and engage with local residents. We will help people visiting the centres to sort and segregate their materials to increase recycling and reduce general waste.

3. Use a materials sorting facility to extract items which could have been recycled at home

2.5% recycling rate increase

2012

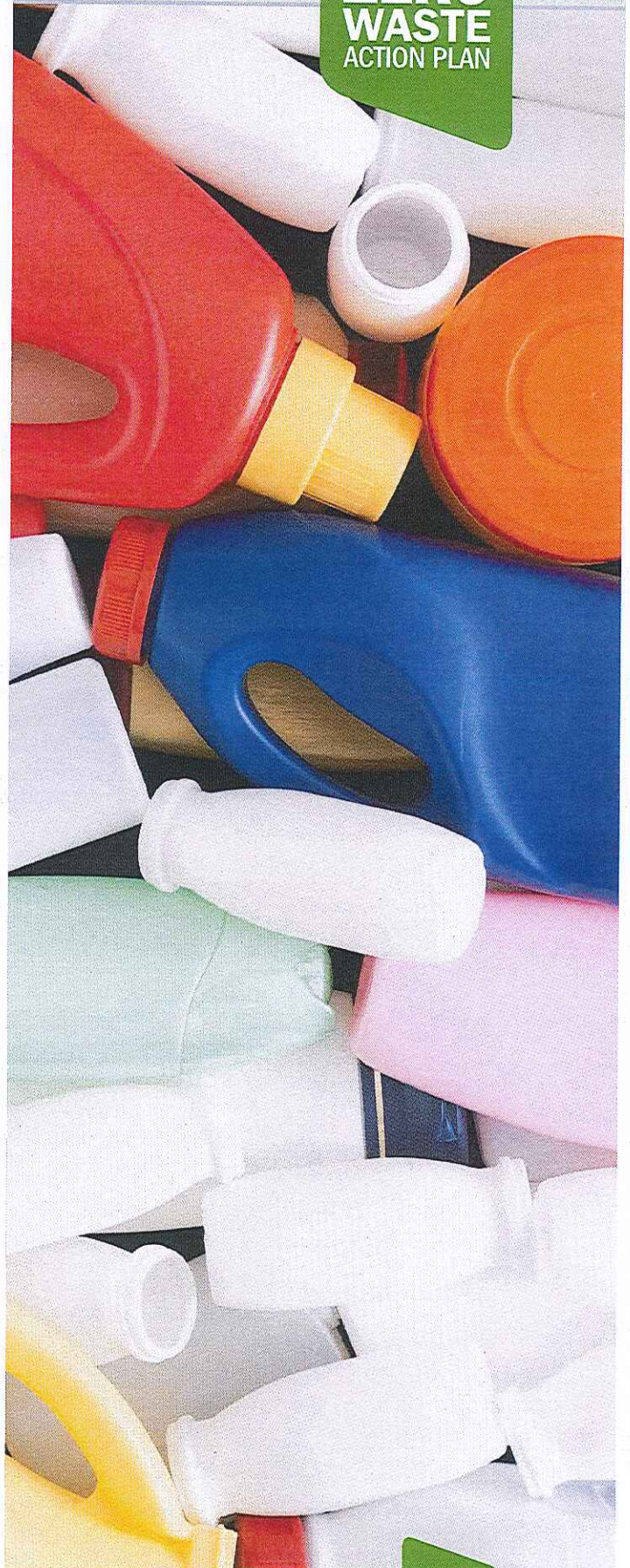
We will work with our neighbouring councils (arc21) to share landfill allowances so we can achieve biodegradable waste targets and avoid any fines.

2013

We will send some of our black bin waste to a treatment facility which will:

- sort it,
- remove any recyclables,
- shred the remaining waste, and
- turn the shredded waste into a fuel.

Although this will help us significantly reduce the amount of waste going to landfill and help us meet our future biodegradable waste targets it does cost more than traditional recycling. By recycling at home you will help us avoid these additional waste costs.



4. Develop new recycling campaigns and community based recycling initiatives

1.5% recycling rate increase

2012 - 2014

We will introduce a new, educational and advisory campaign, which will be based on Belfast specific research. The messages will contain a strong call to action, be engaging, and encourage residents to participate in kerbside schemes and in the city's recycling drive.

To help in this task we will meet with community, ethnic, youth and older people's groups, as well as elected representatives to develop tailored campaigns on a localised basis to increase the amount of recyclables collected from particular areas.

We will establish partnerships with community groups, volunteers and social enterprises to increase recycling rates.

We will run a food waste campaign to encourage more residents to use their kitchen caddies and compost their food as only half of households currently use this service.



5. Increase recyclables collected from existing waste collections

0.5% recycling rate increase

We will examine our existing collection services and put in place different treatment options to increase recycling and composting.

2012

We will recycle items from our household bulky waste collection service. This service will provide around 1,000 tonnes of quality recyclables each year.

We will also use our recycling campaigns and associated community based recycling initiatives to encourage residents to make the most of their recycling schemes.

6. Collect recyclables from the cityscape (such as markets, events and litter bins)

0.4% recycling rate increase

2012

We will improve the recycling facilities at the various events organised by the council throughout the city, such as the Continental Market, outdoor concerts and sporting events.

We currently collect waste from over 2,000 litter bins across the city. This general waste will be treated to remove the recyclables and the remaining waste will be turned into a fuel for industry. This will reduce the amount of waste ending up in landfill.

We will improve our own internal waste arrangements by rolling out an in-house blue bin and food waste collection scheme for Belfast City Council premises.

7. Give you more room to recycle in your blue bins and “slim” black bins

0.4% recycling rate increase

2012

We will complete the upgrade of blue bins, replacing smaller 140 litre bins, with standard 240 litre bins. This will increase recycling capacity for residents and allow us to broaden the range of materials we collect.

2013

Once we have completed both the blue bin upgrade and ensured every household has a food waste collection service we will reduce the standard size of the black household bins we provide.

Business Recycling

Extend business recycling services

2% recycling rate increase

We run a commercial recycling service in the city centre. This scheme collects approximately 500 tonnes of recyclables per year from over 550 customers.

We also help businesses in the city become more environmentally aware and to take actions which will not only benefit the environment but will also provide them with a return on investment.

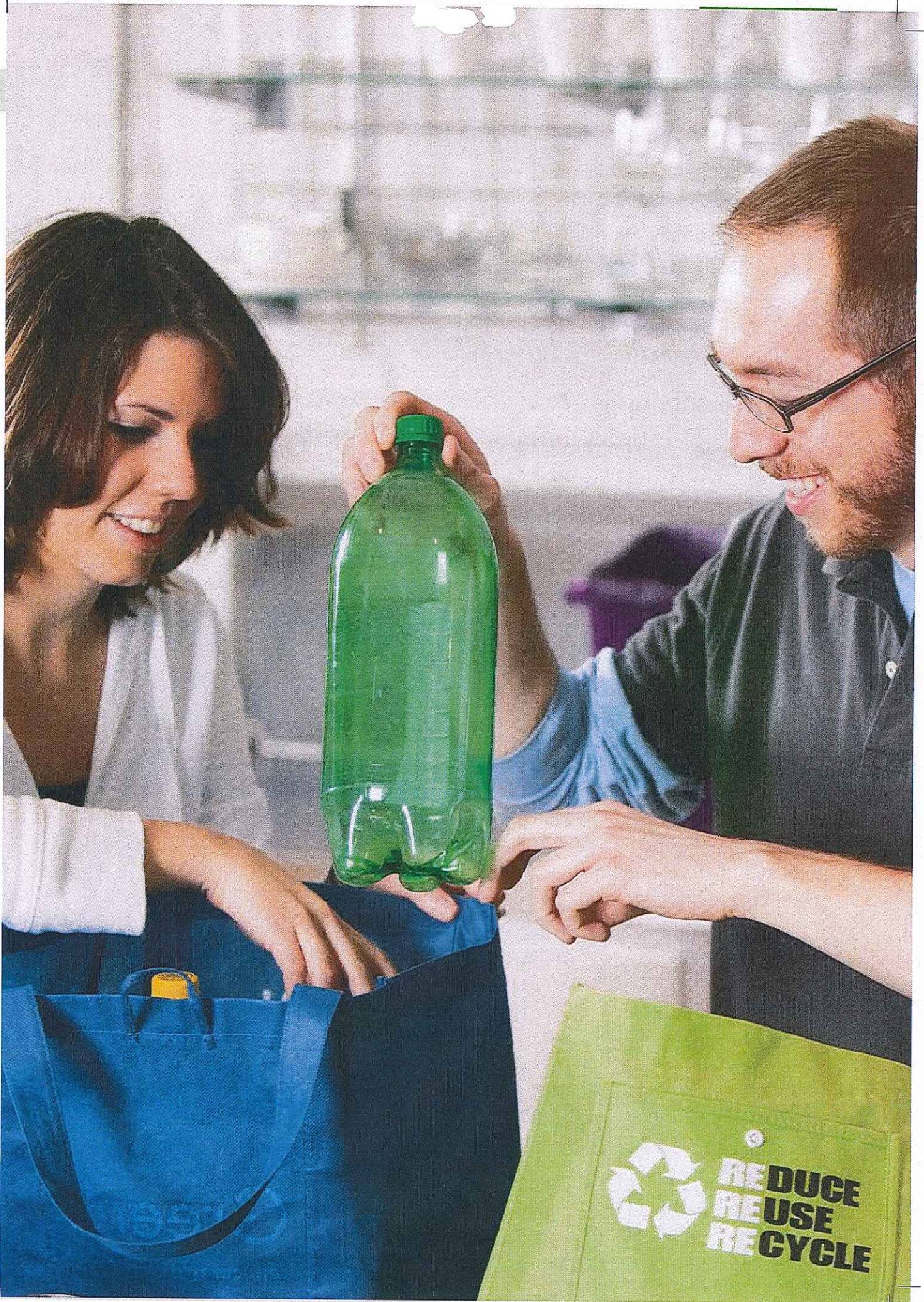
2013

We will extend the commercial recycling service both in terms of geography and the range of materials accepted to include items such as glass, food waste and plastics.



Key area of work	2012	2013	2014	Total
1 Improve kerbside recycling collection services <ul style="list-style-type: none"> • Special recycling collections for apartments and housing estates • New food waste collection for inner-city households • Collect glass from households using blue bins 	0.2%	2.5% 2.5%	2.5%	7.7%
2 Improve recycling centre provisions <ul style="list-style-type: none"> • Remove recyclables from general waste skips • Increase the range of materials we can accept at recycling centres • Open new household recycling centre at Springvale Industrial Estate 	3% 0.5%		2%	5.5%
3 Use a materials sorting facility to extract items which could have been recycled at home <ul style="list-style-type: none"> • Send some general waste to treatment facility or share allowances to meet biodegradable waste targets • Join with other neighbouring councils to send general waste to treatment facility 		2.5%		2.5%
4 Develop new recycling campaigns and community based recycling initiatives <ul style="list-style-type: none"> • Call to action, localised, tailored campaigns • food waste campaign 	0.5%	0.5%	0.5%	1.5%
5 Increase recyclables collected from existing waste collections <ul style="list-style-type: none"> • Recycle items collected from household bulky waste collection service 	0.5%			0.5%
6 Collect recyclables from cityscape <ul style="list-style-type: none"> • Collect recyclables from street litter bins • Collect recyclables from city events • Roll out blue bin and food waste collection scheme for Belfast City Council premises* 	0.10% 0.10% 0.20%			0.4%
7 Increase blue bin capacity and “slim” black bins <ul style="list-style-type: none"> • Upgrade blue bins to 240L bins • Slim black bins 	0.20%	0.20%		0.4%
* Extend business recycling services <ul style="list-style-type: none"> • Increase the range of materials we can accept in business recycling collections 	1%	1%		2%
Total projected household recycling rate	37.1%	45.3%	50.3%	

*Contributes to municipal recycling rate rather than household rate.



TOWARDS
ZERO
WASTE
ACTION PLAN
2012 - 2015

www.belfastcity.gov.uk/waste